

SDHA Antibody
Rabbit mAb
Catalog # AP91182**Specification**

SDHA Antibody - Product Information

Application	WB, IHC, FC, ICC, IP
Primary Accession	P31040
Reactivity	Rat
Clonality	Monoclonal
Other Names	
PGL5; SDH1; SDH2; SDHA; SDHF;	
Isotype	Rabbit IgG
Host	Rabbit
Calculated MW	72692 Da

SDHA Antibody - Additional Information

Dilution	WB~~1:1000 IHC~~1:100~500 FC~~1:10~50 ICC~~N/A IP~~N/A
Purification	Affinity-chromatography
Immunogen	A synthesized peptide derived from human SDHA
Description	Flavoprotein (FP) subunit of succinate dehydrogenase (SDH) that is involved in complex II of the mitochondrial electron transport chain and is responsible for transferring electrons from succinate to ubiquinone.
Storage Condition and Buffer	Rabbit IgG in phosphate buffered saline , pH 7.4, 150mM NaCl, 0.02% sodium azide and 50% glycerol. Store at +4°C short term. Store at -20°C long term. Avoid freeze / thaw cycle.

SDHA Antibody - Protein Information**Name** SDHA**Synonyms** SDH2, SDHF**Function**

Flavoprotein (FP) subunit of succinate dehydrogenase (SDH) that is involved in complex II of the mitochondrial electron transport chain and is responsible for transferring electrons from succinate to ubiquinone (coenzyme Q) (PubMed:<a href="http://www.uniprot.org/citations/10746566"

target="_blank">10746566, PubMed:24781757). SDH also oxidizes malate to the non-canonical enol form of oxaloacetate, enol- oxaloacetate (By similarity). Enol-oxaloacetate, which is a potent inhibitor of the succinate dehydrogenase activity, is further isomerized into keto-oxaloacetate (By similarity). Can act as a tumor suppressor (PubMed:20484225).

Cellular Location

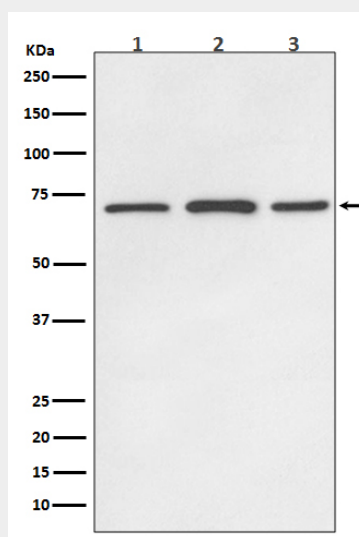
Mitochondrion inner membrane; Peripheral membrane protein; Matrix side

SDHA Antibody - Protocols

Provided below are standard protocols that you may find useful for product applications.

- [Western Blot](#)
- [Blocking Peptides](#)
- [Dot Blot](#)
- [Immunohistochemistry](#)
- [Immunofluorescence](#)
- [Immunoprecipitation](#)
- [Flow Cytometry](#)
- [Cell Culture](#)

SDHA Antibody - Images



Western blot analysis of SDHA expression in (1) HeLa cell lysate; (2) Mouse brain lysate; (3) Rat brain lysate;